



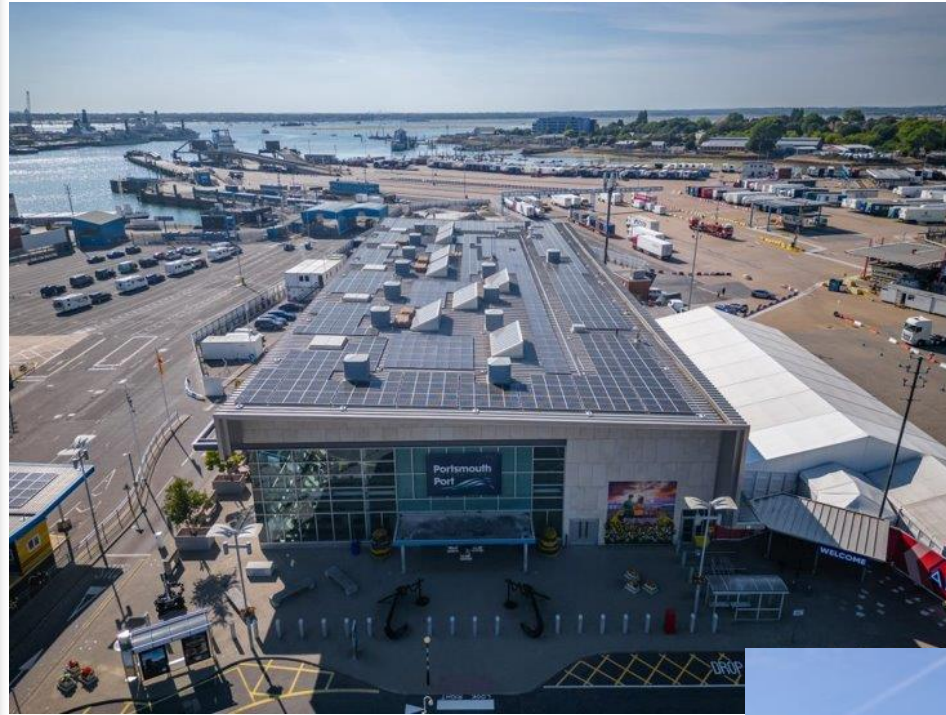
Bringing Port Skills to Life

Digital Innovation supporting career development and outreach

Chris Hatter
Head of Compliance

Pablo Aguirre Babiloni
Chief Executive Officer

- UK's best connected and largest municipal port
- Contributes nearly £200m p/a to Portsmouth area and 2'500 direct jobs
- Handles around 4m tonnes of good annually
- Significant improvements on the back of our 20 year Masterplan
- Pledged to be carbon net zero by 2030 and emission free by 2050



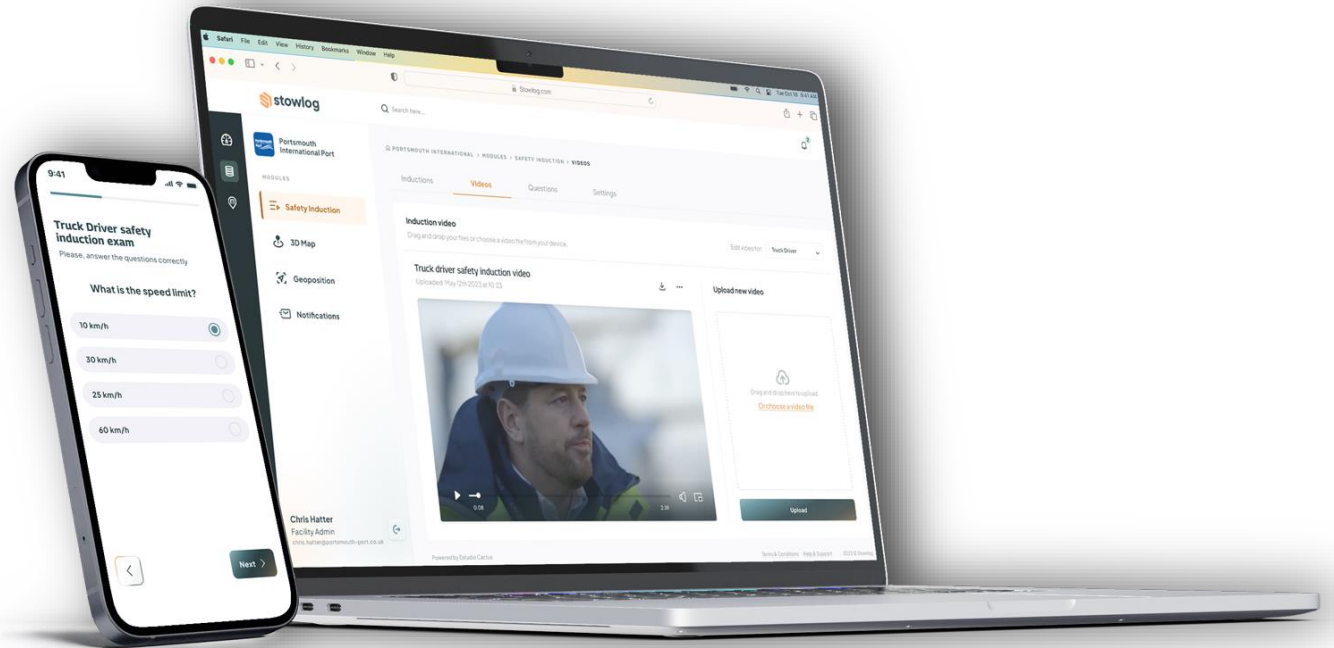
- HSSE Software Specialist
- SME set up in 2017 and growing
- Solving problems in the industrial, particularly port sector
- Have developed a modular SaaS for ports: Stowlog (FIF)
- Empathy, exigence and innovation



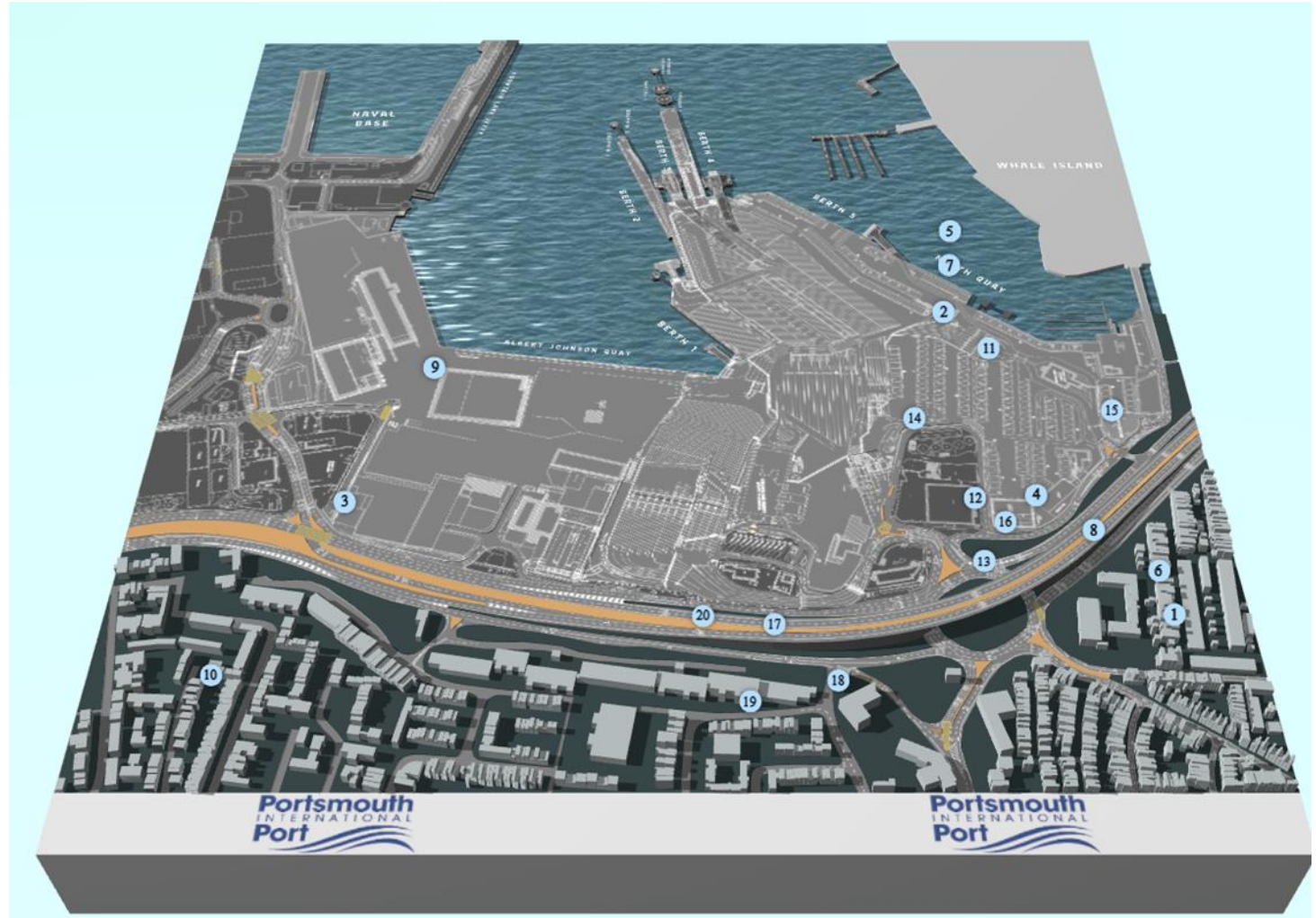
- Project with Portsmouth being developed as part of the Freight Innovation Fund
- A DfT funded project as part of the Future of Freight Plan
- Aim to boost innovative data and technological solutions coming to market
- Goal to create greater sector awareness and develop future pipeline



- Developing a new induction, visitor and contractor process
- Geolocation to assist safe working, way finding, improve customer experience
- Provide a 3D map of the port
- Make efficiencies in Port movement and reduce emissions
- Have a more predictable port



- Desire to make our skills work more accessible
- Seeing this on a map helps make it interactive
- Develops learning through different routes
- Can link multiple resources to the map

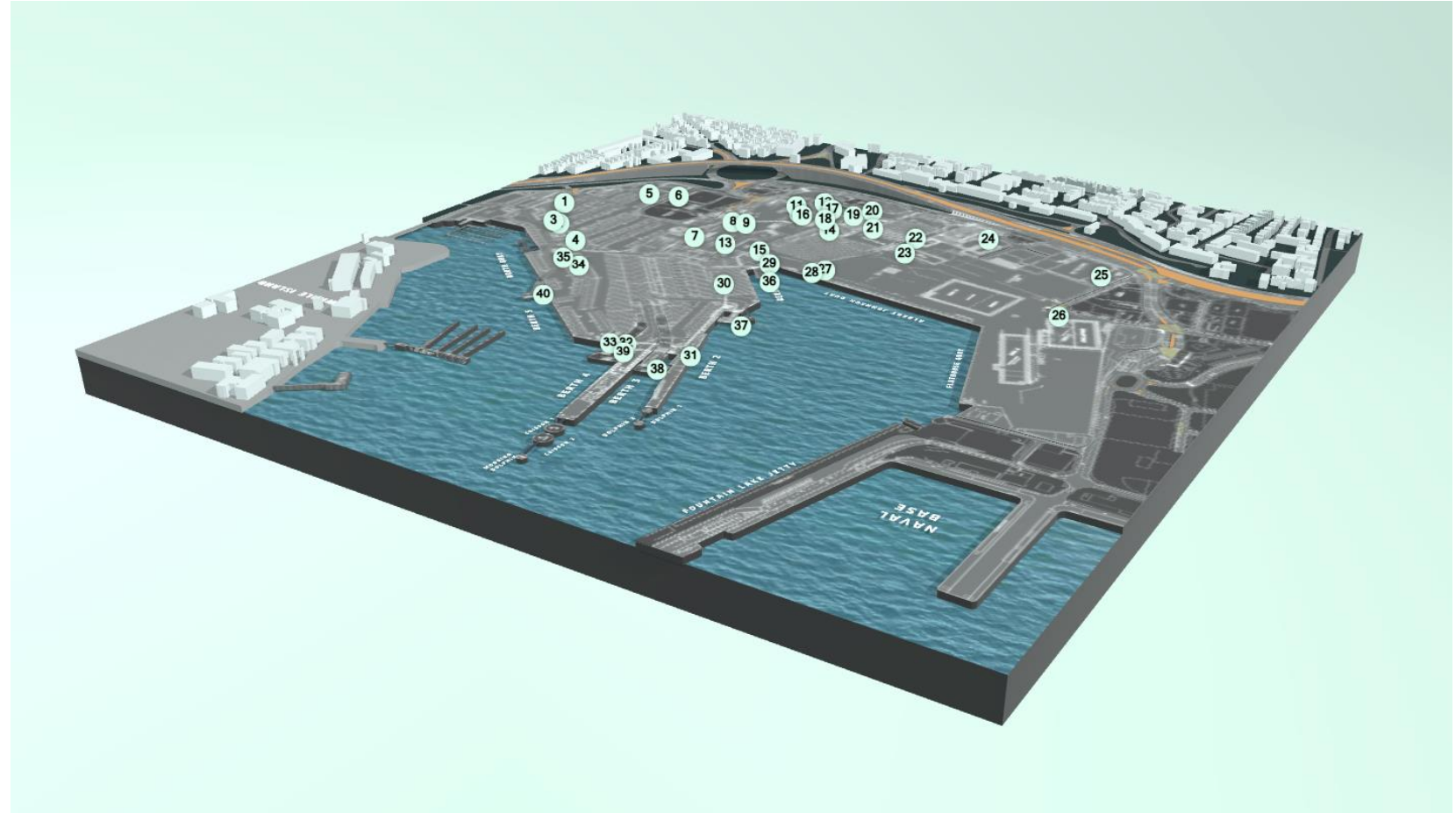


Clicked link to:

- Our solar PV project



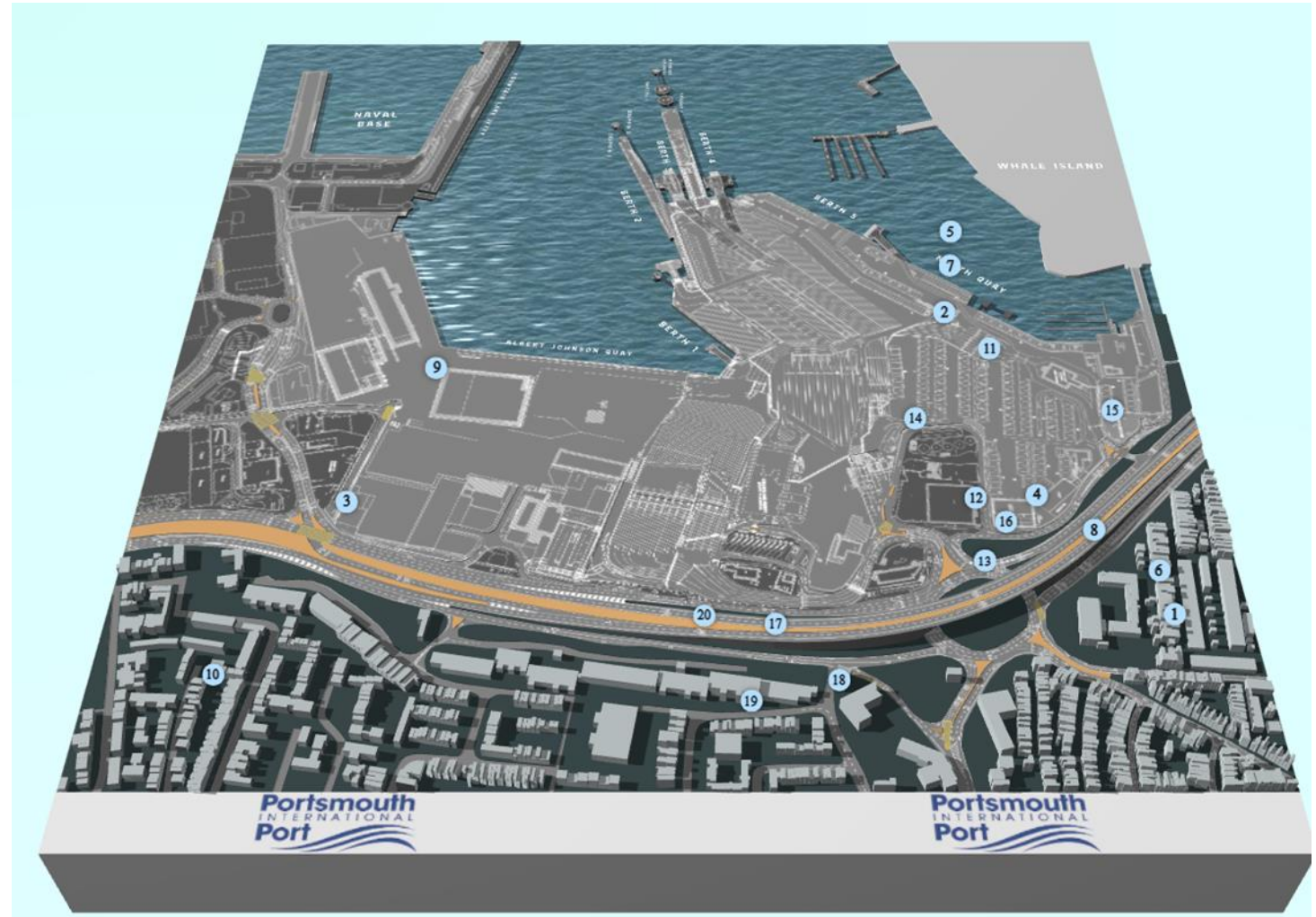
- Find out more about our Harbour Master team



[Heavy lift ship Grietja](#)
[arriving for wind blades](#)
[#ship #shiptok #hipho... |](#)
[TikTok](#)



Click to see what cruise is doing to go green.....



[CLIA \(cruiseinfohub.com\)](https://cruiseinfohub.com)



CLIA

SELECT LANGUAGE: ENGLISH

THE OCEANS WE SAIL

Protecting the oceans that we sail is vitally important. Find out how cruise lines are investing in environmental technologies onboard and protecting ocean habitats.

EXPLORE THE SHIP

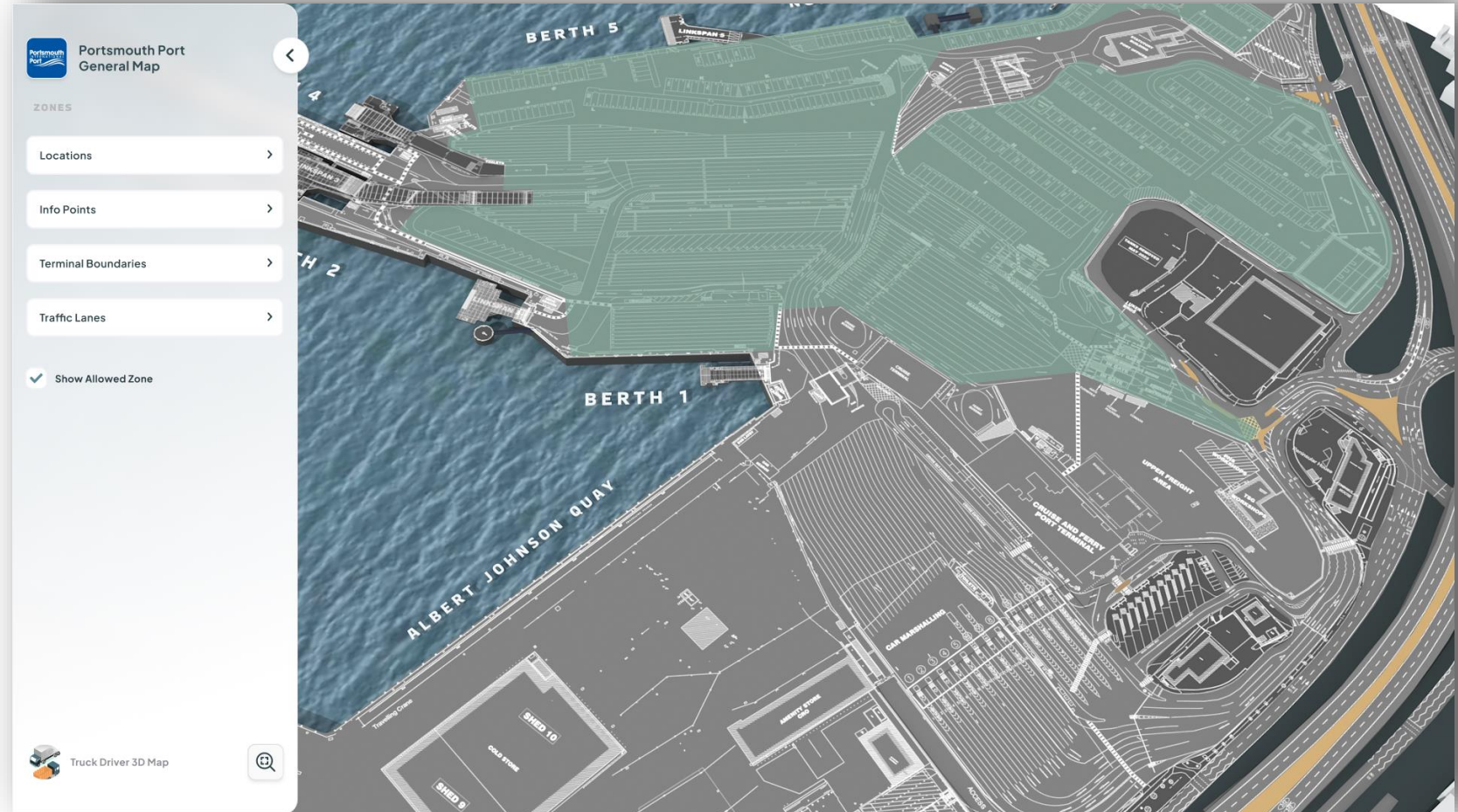
FIND OUT MORE

SCROLL TO CONTINUE YOUR JOURNEY

↓

Internal site with training for the team.....

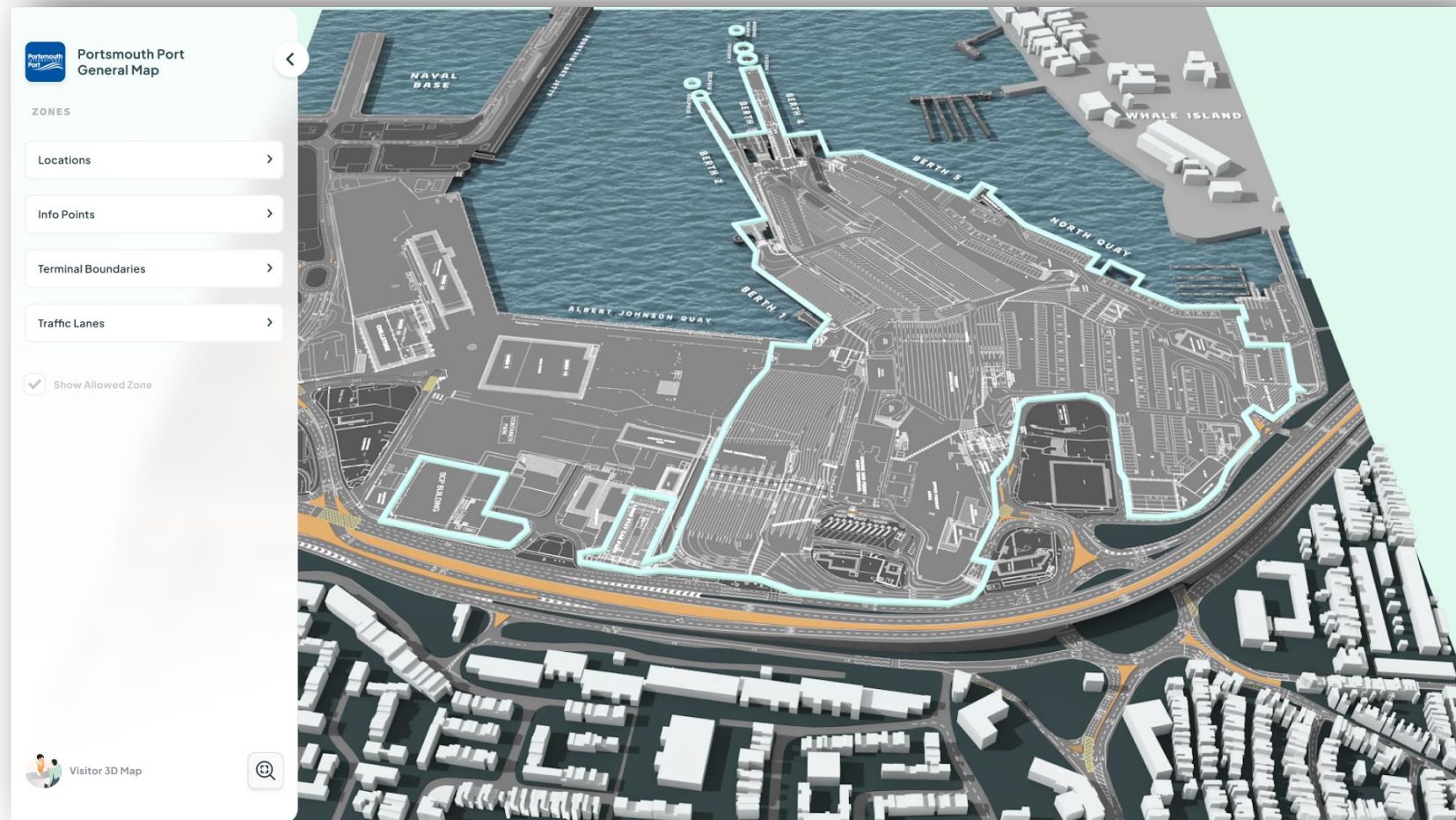
Using an internal model within the port you can attach other training aids.



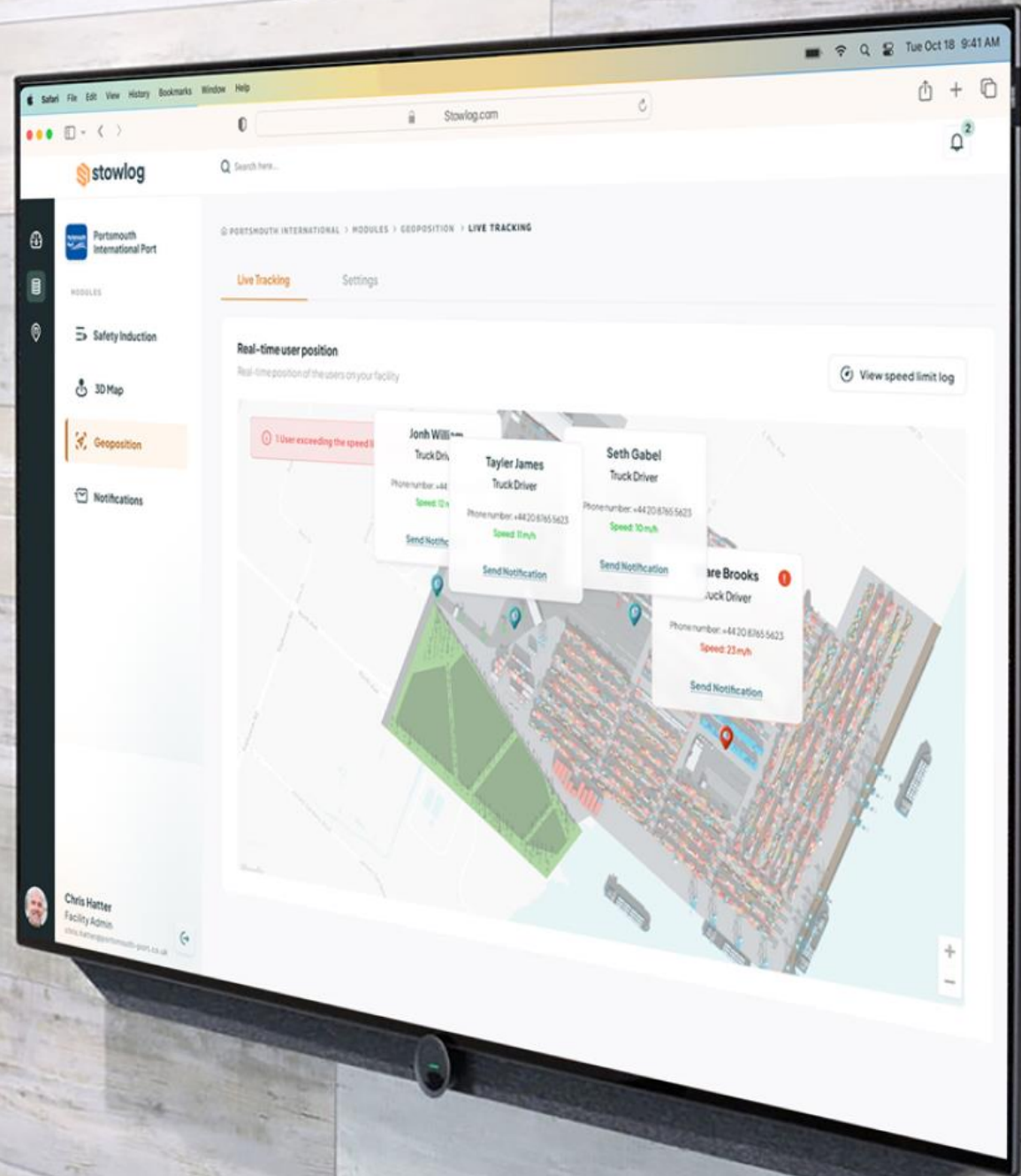
[Safe Mooring \(imo.org\)](https://www.imo.org)



- Different layers for external visitors
- Route directions for better location
- Overlapping different zones and perimeters
- Reduce risks to people showing the facilities



- With safety, you get productivity
- Commercial team showing potential tenants where sheds are with berths, obstructions, routes being clear
- Real time data collection will lead to a more protected environment
- Engineering planning for areas that will become out of bounds
- Demonstrating efficiency through innovation



- By applying one technology solution for health and safety we can leverage much more
- Interactive and self learn opportunities to explore for children
- Practical help for staff



Looking forward

- Sustainability includes plans for the future workforce
- Includes working with our community and neighbours
- Means making improvements for the whole of Portsmouth
- Leading the industry
- Shouting about what we are all doing
- Learning and sharing best practice
- Continually striving for improvements



An aerial photograph of a large industrial harbor, likely in the Pacific Northwest, showing numerous shipyards, large industrial buildings, and a wide waterway. The sky is overcast with dark, heavy clouds. The text "Any questions?" is overlaid in the center in a large, white, sans-serif font.

Any questions?